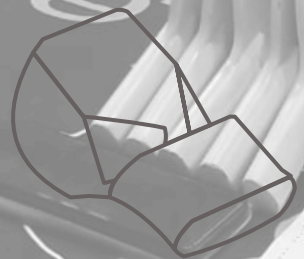




Your Basketball League C.I.C.

AoR: Area's of Responsibility

Supporting document

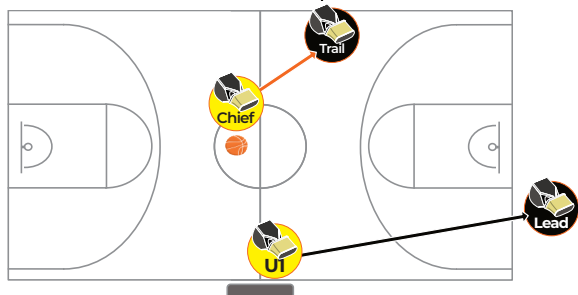


Starting the Game - Positions

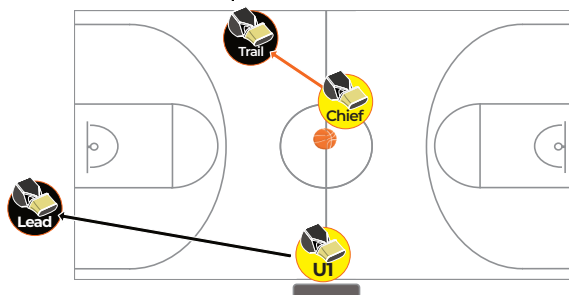
Crew chief to become trail in any direction of play.

Umpire 1 to become lead in any direction of play.

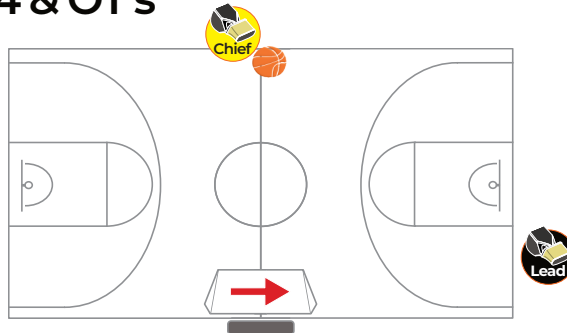
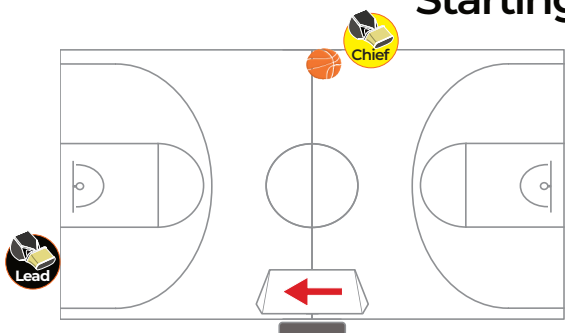
Play to Chief's left



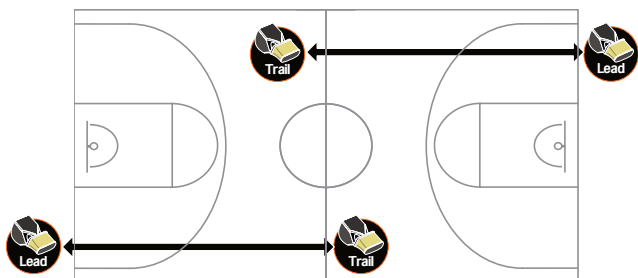
Play to Chief's right



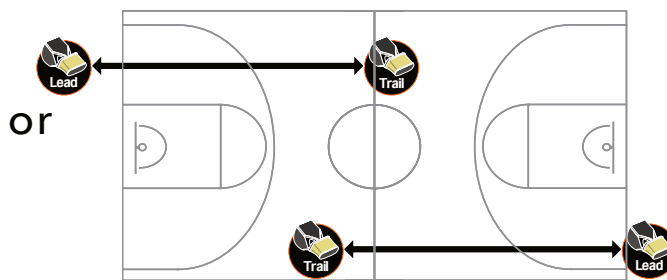
Starting Qtr 2, 3, 4 & OT's



Stay the same side!



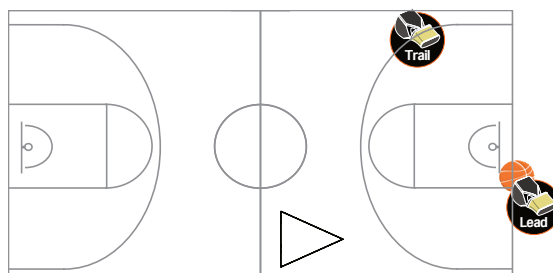
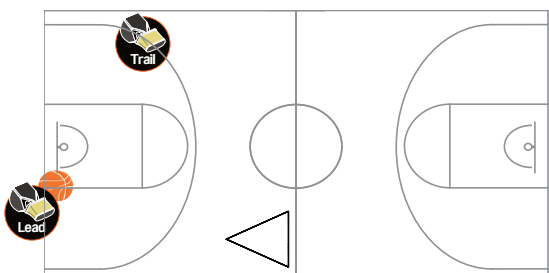
Lead and trail are to stay in the same position until something is called for you to rotate sides.



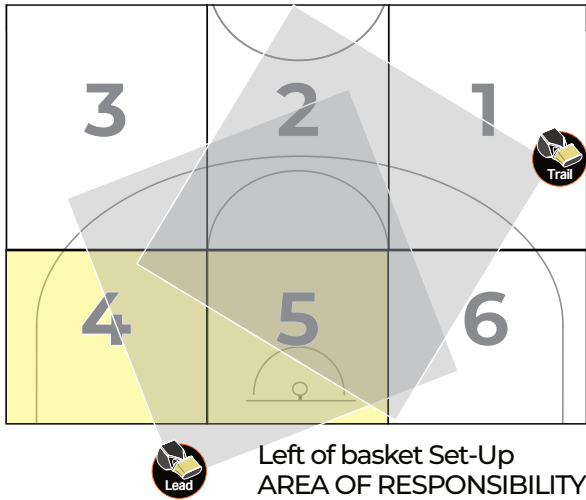
Free-Throw administration

The lead official administering the ball to the free-throw shooter is always table side

The 'trail' official is always opposite the table in-line with the free-throw line.



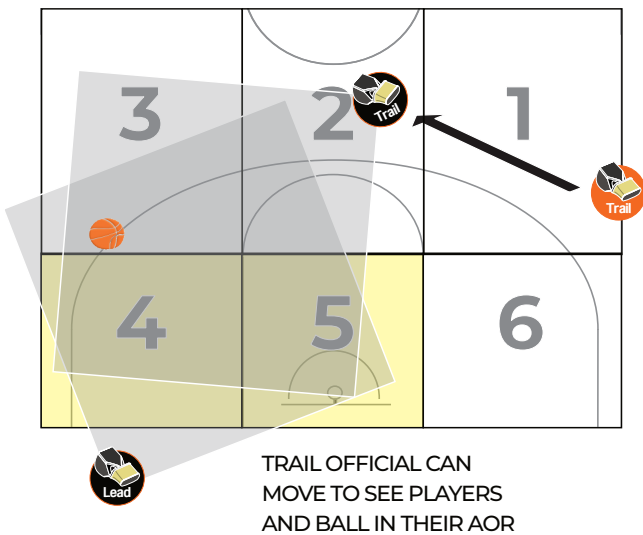
Lead Set-Up lead left of the basket



Out of Bounds (Opposite lead)



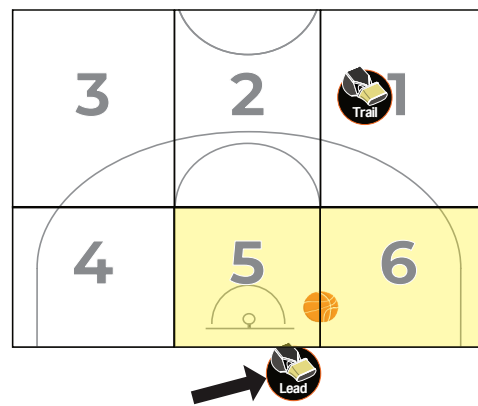
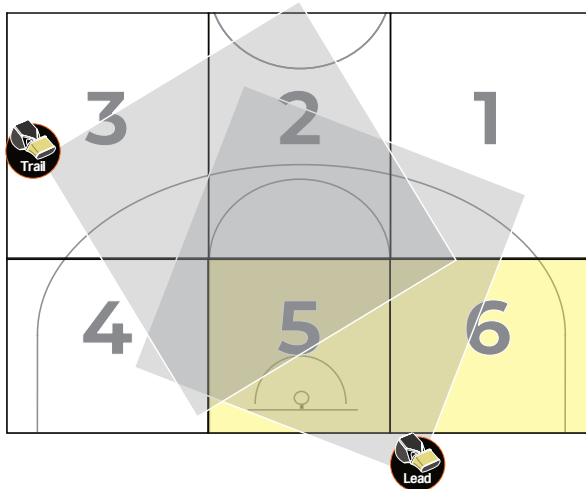
Trail Movement position



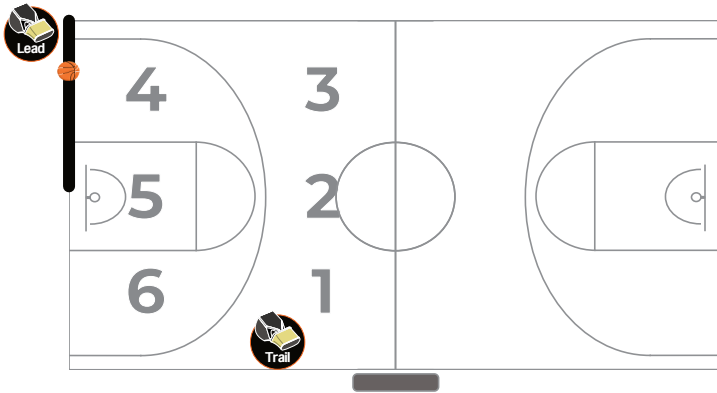
Lead to the Action!

If the lead is on the opposite side of box 5 when there is action or a block play - move over to officiate it! Trail is not to rotate, and lead to move back after the action has happened.

Trail when lead is right of the basket



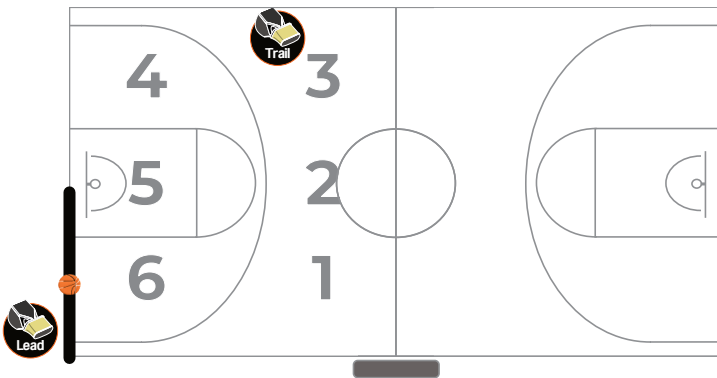
AoR: Area's of Responsibility (2PO) MECHANICS



OUT OF BOUNDS and inbounding the ball baseline, left of the basket.
- Box 4 - *Lead Official inbound*

Lead and trail set-up

The lead official should **NOT** inbound the ball on the sideline.

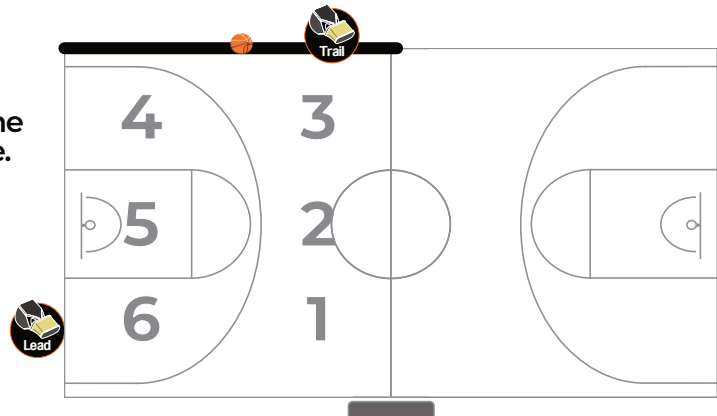


OUT OF BOUNDS and inbounding the ball baseline, left of the basket.
- Box 6 - *Lead Official inbound*

Lead and trail set-up

OUT OF BOUNDS and inbounding the ball on the sideline opposite the table.
- Box 3 and 4 - *Trail Official inbound*

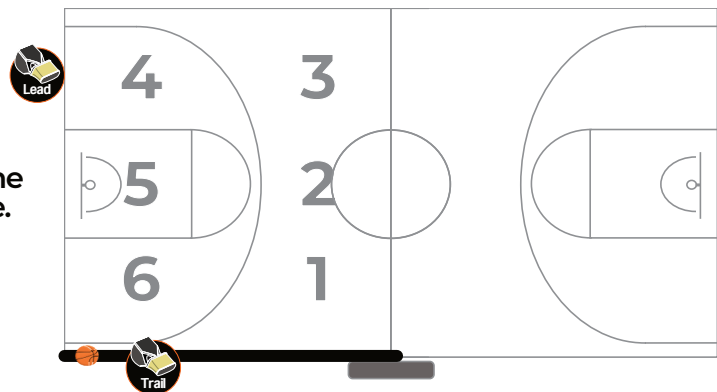
Lead and trail set-up



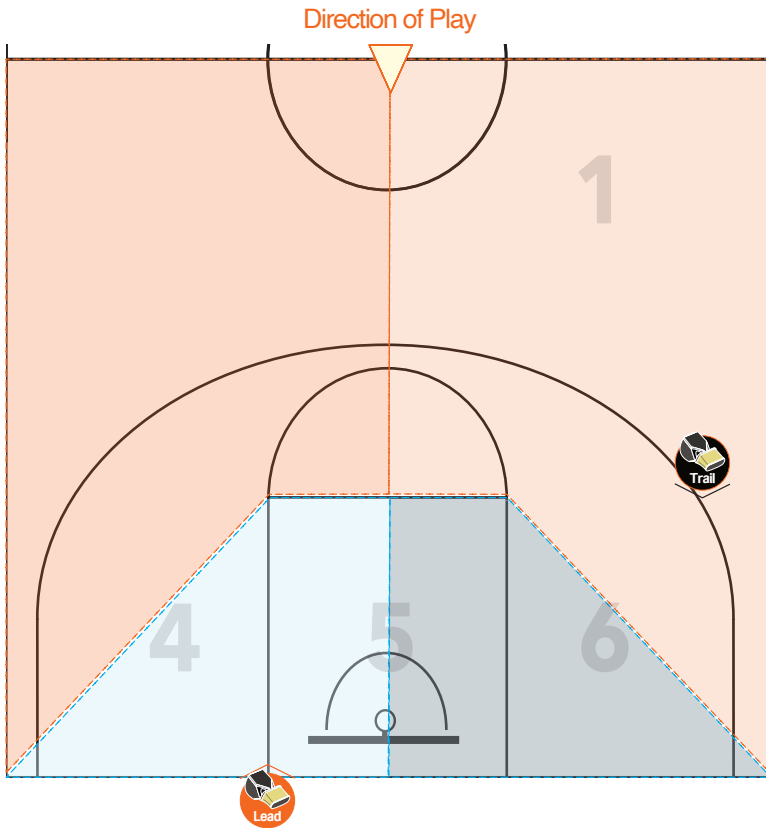
Trail official is always responsible for administering violations on the half way line

OUT OF BOUNDS and inbounding the ball on the sideline opposite the table.
- Box 1 and 6 - *Trail Official inbound*

Lead and trail set-up



Inbounding the ball after a violation or non-shooting foul When 'Lead' Inbounds the ball



Following non-shooting foul and any violation in part of Box 4, 5 and part of Box 6, the lead referee will inbound the ball on the baseline closest to where the infraction occurred.

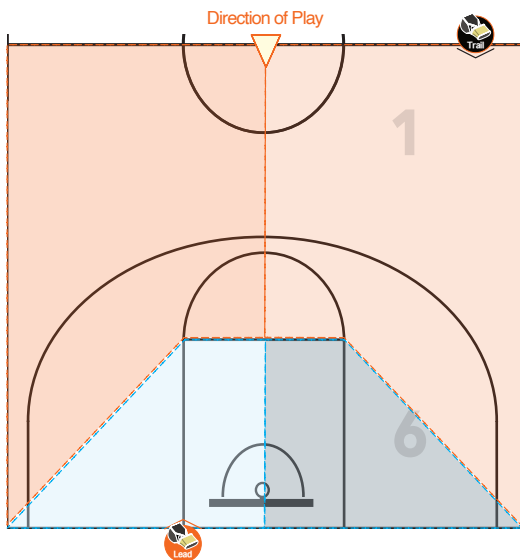
Part of Box 4 (shaded blue), and to the left side of Box 5, inbounding to the left of the basket.

Part of Box 6 (shaded blue) and to the right of Box 5 inbounding to the right of the basket.

The shaded orange sections the trail referee will inbound the ball closest to where the infraction occurred.

Lead & trail to adjust to their new position accordingly, depending where the ball is now being inbounded by lead.

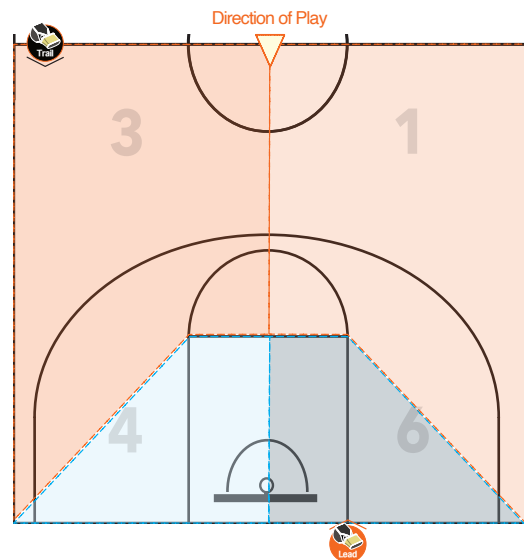
When 'Trail' Inbounds the ball



Following a back court violation, the ball will be inbounded opposite the table in the front court, with a new 14 second offence.

Following non-shooting foul and any violation in box 1 and 6, the trail referee will inbound the ball on the sideline closest to where the infraction occurred.

The shaded orange sections the trail referee will inbound the ball closest to where the infraction occurred.



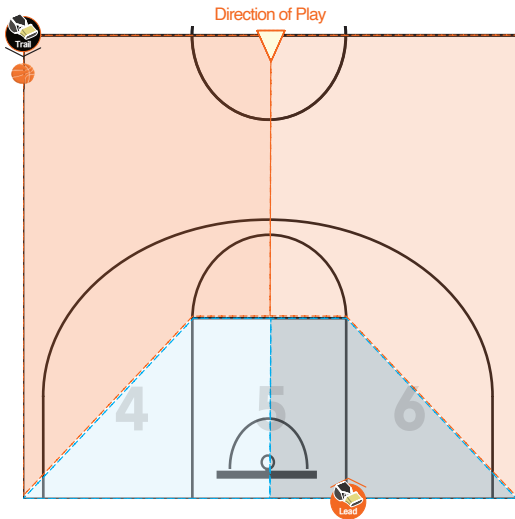
Following non-shooting foul and any violation in box 3 and 4, the trail referee will inbound the ball on the sideline closest to where the infraction occurred.

The shaded orange sections the trail referee will inbound the ball closest to where the infraction occurred.

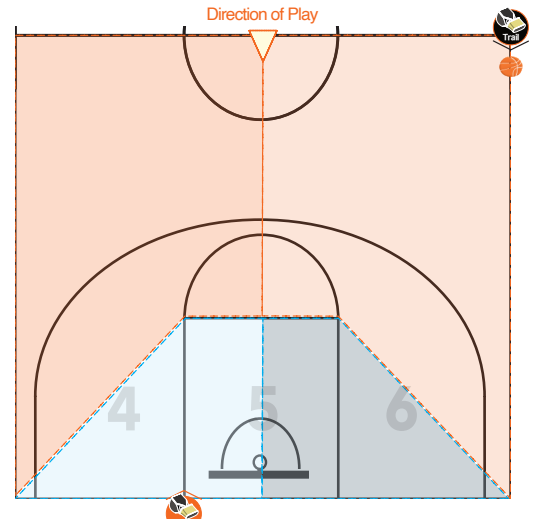
Lead & trail to adjust to their new position accordingly.

Inbounding the ball after a violation or non-shooting foul

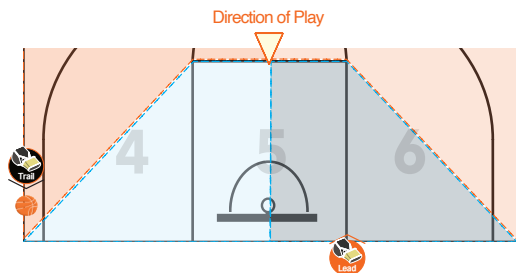
Inbounds the ball Examples



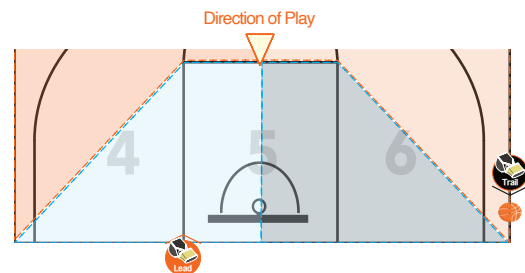
Inbounding Box 3 and Box 4, where the ball is being inbounded on the sideline. The trail referee inbounds the ball while lead will set-up on the opposite side of the basket on the baseline.



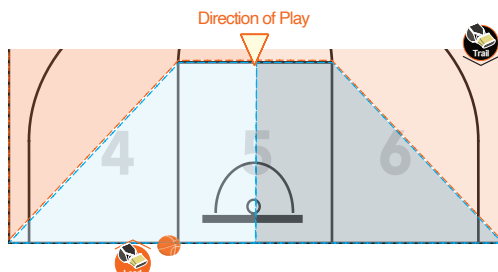
Inbounding Box 1 and Box 6, where the ball is being inbounded on the sideline. The trail referee inbounds the ball while lead will set-up on the opposite side of the basket on the baseline.



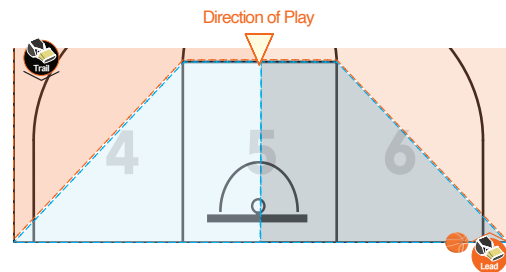
Sideline inbound (box 4), where the ball is being inbounded on the sideline. The trail referee inbounds the ball while lead will set-up on the opposite side of the basket on the baseline.



Sideline inbound (box 6), where the ball is being inbounded on the sideline. The trail referee inbounds the ball while lead will set-up on the opposite side of the basket on the baseline.



Baseline in-bound (box 4 & 5), where the ball is being inbounded on the baseline. The lead referee inbounds the ball while trail will set-up on the opposite side of the basket in the trail position.



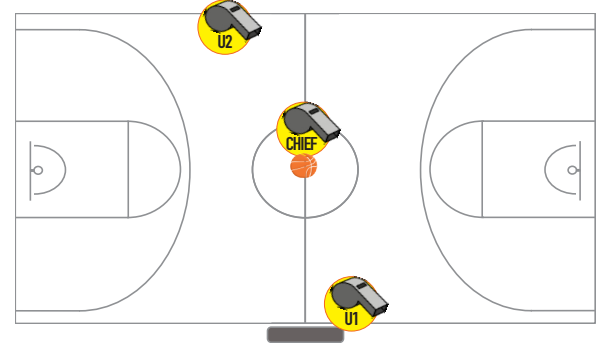
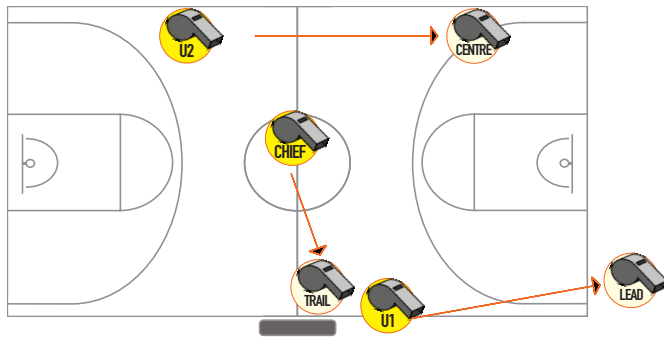
Baseline in-bound (box 5 & 6), where the ball is being inbounded on the baseline. The lead referee inbounds the ball while trail will set-up on the opposite side of the basket in the trail position.



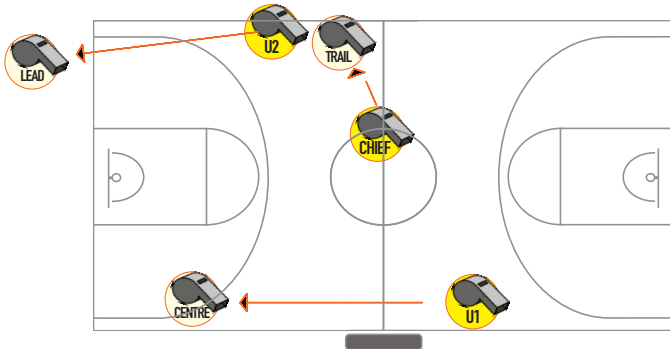
AoR: Area's of Responsibility (3PO) 3 PERSON OFFICIATING

Starting the Game - Positions

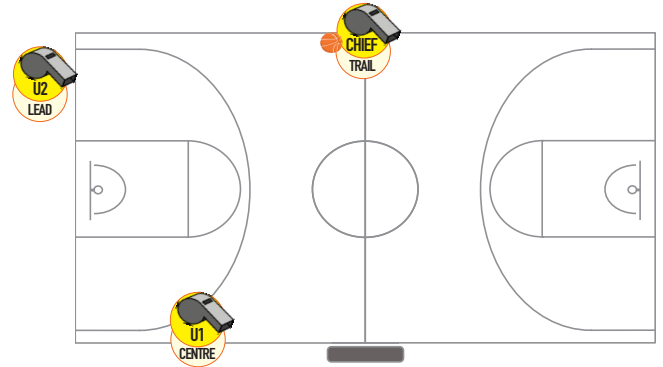
▶ Play to Chief's left



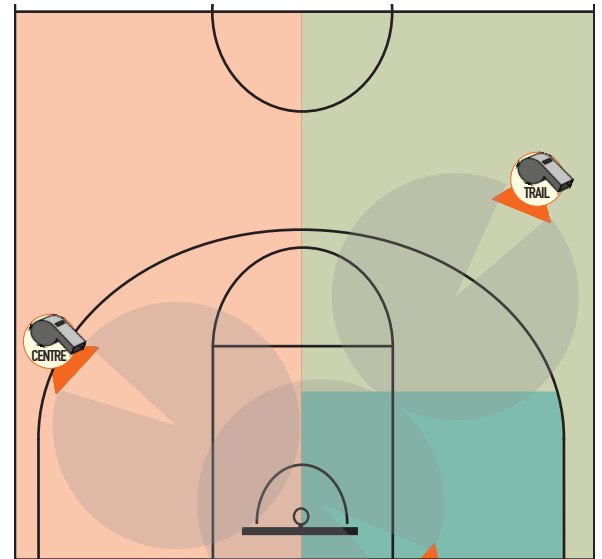
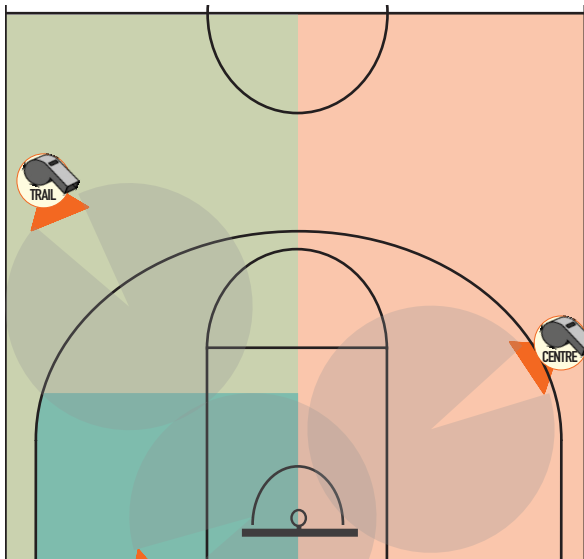
◀ Play to Chief's right



Starting Q2, Q3, Q4 & OT



AoR: Area's of Responsibility (3PO) 3 PERSON OFFICIATING



DON'T CHANGE POSITIONS WITH LESS THAN TEN SECONDS ON THE SHOT CLOCK OR IF YOU THINK THE PLAYER IS ABOUT TO SHOOT THE BALL.



AoR: Area's of Responsibility



HOME 3
GUESTS 6